

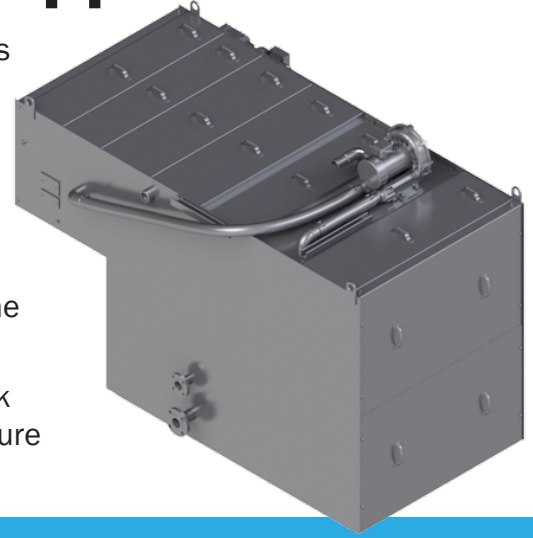
# PermaVac Filtration Modular System for High Speed Grinding Applications

The Filtra-Systems Company PermaVac PV50 filtration module is designed to achieve the required clarity for typical high speed gear grinding, fine grinding and polish grinding applications.

The standard PV filter module comes equipped with capability to run with a permanent belt only or single use media. Both can be used together to increase belt life and filtration efficiencies.

Swarf is indexed incrementally from the filter module through the cake drying section (coolant removal process) and discharged.

Coolant control valves and pumps are included in the clean tank to deliver the cutting fluid to the machine at the required pressure and flow.



## FEATURES AND BENEFITS

- **Permanent Belt with Single Use media options provide you with unmatched versatility even in the most challenging filtering processes**
- **Integrated Belt Wash see to it you get a long Permanent Belt life**
- **Built-in Cake Drying system ensures minimal coolant carry-off**
- **Small footprint for integration into tight layouts**
- **Clean/Dirty Tank manages coolant levels and maintains tank cleanliness**
- **Robust construction that can operate up to -20in Hg vacuum**
- **Integrated PLC Control options execute filter function and communicate status to machine tool**
- **The filter can easily be optimized for processes that are tough to build filter cakes**
- **Easy access to critical areas for service and maintainability**
- **Many additional Accessories available: mist collection, high pressure supply, temperature control and more to cost effectively meet all your machine coolant requirements.**
- **And much more...**

## APPLICATIONS

**Grinding, Machining, Drilling, Milling, Turning, Broaching, Honing, and more!** The PermaVac (PV50) is guaranteed to get you the required cutting fluid clarity for your typical high speed gear grinding, fine grinding and polishing grinding. Including, most machining applications producing fine chips.



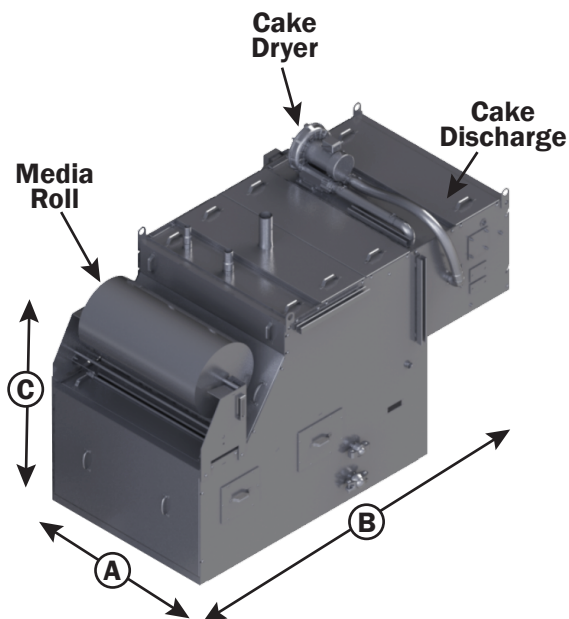
**Request Your Free Consultation & Quote Today**

Office Phone: 248-427-9090

4000 Town Center, Suite 800

Southfield, MI 48075 USA

[info@filtrasystems.com](mailto:info@filtrasystems.com)



**Base Dimensions:**

**A = 45"**

**B = 95"**

**C = 56"**

## BASE FILTER SYSTEM

- **Small footprint for integration into tight layouts.**
- **Clean / Dirty Tank properly manages coolant levels and maintains tank cleanliness**
- **Integrated PLC Control options execute filter function and communicate status to machine tool and end user plant management systems**
- **Additional Accessories available to cost effectively satisfy all your machine coolant requirements:**
  - Filtra-Systems Stealth Mist Collection
  - Air or Water based coolant temperature control
  - Profi-Net, EtherNet/IP and other communication protocols
  - Return Pump for management of soiled coolant
  - Oil water separation
  - Automatic Media Rewinder
  - High pressure coolant and low pressure
  - Coolant managing valve system.
- **The Custom System: Combining filtration and systems engineering, helps Filtra-Systems design the best OEM solution for your machine tool requirements:**
  - Wide range of flow rates and pressures capable for almost any machine requirement.
  - Global support and responsive service
  - Stocked spare parts and consumables.

Machine tool and metal cutting have many unique challenges.

Engineering a standard system, capable and flexible with many accessory offerings, we build many standard and customize configurations to meet or exceed all your requirements.

## SYSTEM INSTALLATION REFERENCES

**INSTALLED PV50**



**INSTALLED PV50**



**PV50 FILTER CAKE**

